



# WIMBY – Wind In My BackYard:

Using holistic modelling tools to advance social awareness and engagement on large wind power installations in the EU.



This project has received funding from the European Union's research and innovation programme Horizon Europe under the grant agreement No. 101083460.

## Short Overview

The WIMBY project goal is to support the adoption and acceptance of wind-power in the European Union by addressing challenges that threaten its deployment and developing innovative tools to facilitate citizen and stakeholders interaction, knowledge sharing, and collaborative evaluation of impacts.

## Methodology



Identify and assess the concerns and impacts from social, health, and environmental perspectives



Identify who are the different actors affected



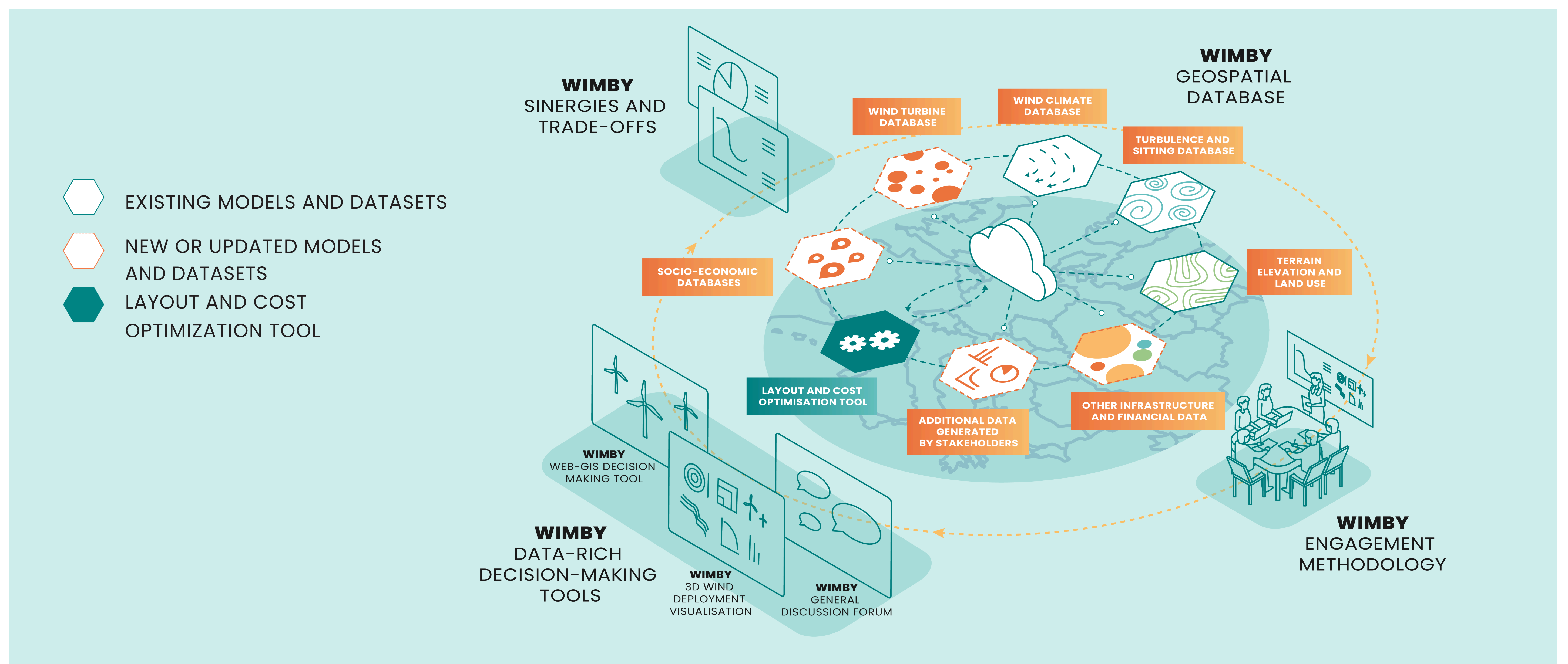
Identify trade-offs and synergies between impacts to create deployment strategies



Apply Citizen Science and Social research methodologies to involve local stakeholders in decision-making processes

## Objectives

- #01** To evaluate the impacts on biodiversity (terrestrial and marine fauna).
- #02** To evaluate how wind farms affect local communities and address issues concerning governance, regulation, health, safety, and landscape impacts.
- #03:** To identify the best areas for wind power farms deployment and develop methods to foster social acceptance.
- #04:** To validate modelling tools and develop guidelines to deliver clear overviews of the cumulative impacts of wind installations.
- #05:** To develop a Web-GIS interactive forum where stakeholders and local communities can exchange information to support the planning of new wind parks.
- #06:** To build an immersive 3D environment that allows stakeholders to better understand the impacts and the trade-offs of wind energy development.
- #07:** To develop a framework for wind farm planning, which will include guidelines for participatory processes extrapolated from the forum.



## Contacts

### Project coordinator

Thierry Coosemans  
Vrije Universiteit Brussels  
[coordinationteam@wimby.eu](mailto:coordinationteam@wimby.eu)

### Scientific coordinator

Luis Ramirez Camargo  
Utrecht University  
[l.e.ramirezcamargo@uu.nl](mailto:l.e.ramirezcamargo@uu.nl)

### Dissemination leader

Rebecca Hueting  
Deep Blue Italy  
[rebecca.hueting@dblue.it](mailto:rebecca.hueting@dblue.it)

### General information:

[info@wimby.eu](mailto:info@wimby.eu)  
[www.wimby.eu](http://www.wimby.eu)

## Consortium

